

Durafirm COLLECTION®



Model 872 V5 Panel, Stockton windows, Adobe Cream finish

MODELS **870, 872** Vinyl clad garage doors that resist dents and rust

- **Bonded steel, polyurethane and vinyl** provide you with incredible strength, impressive sound absorption and energy efficiency with an R-value* of 11.75.
- **Wood grain texture** for the timeless look of freshly painted hardwood. (Standard Panel only).
- **Through-and-through color PVC construction** means the color goes all the way through the exterior vinyl skin so scratches are minimized.
- **UV-resistant resin** contains special polymers that protect your door from harmful ultraviolet rays.
- **Twin structural struts** of 22-gauge steel C-channels run the full length of each panel and are anchored to interior steel stiles for strength.

*Overhead Door Corporation uses a calculated door section R-value for our insulated doors.

The Genuine. The Original.



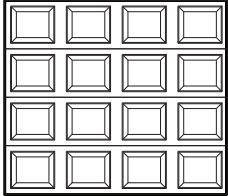
Durafirm Collection®

Select your door panel style and color

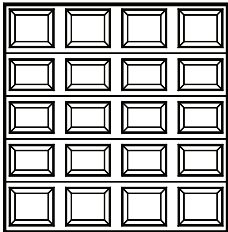
1 Choose a panel style:

Standard Models 870

7'
tall

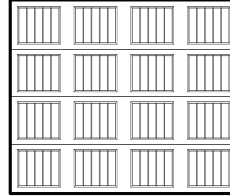


8'
tall

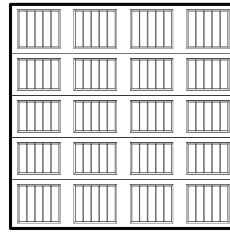


V5 Model 872

7'
tall



8'
tall



1 car design shown. Both panels are also available for 2 car designs.

2 Choose a color:

Actual colors may vary from brochure due to fluctuations in the printing process.

Always request a color sample from your Overhead Door Distributor for accurate color matching.



Glacier White



Cape Cod Gray



Monterey Sand



Adobe Cream



Model 870 Standard Panel, Williamsburg windows, Glacier White finish

Durafirm Collection®

Customize your door with windows

2 Choose a window style:



Clear



Cathedral 1



Ruston 1



Stockton



Williamsburg



8-piece Williamsburg



4-piece Williamsburg

Choose a glass type:

Available in insulated and non insulated.



Clear

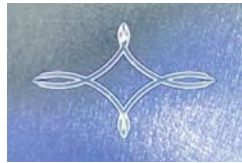


Obscure

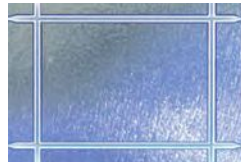
Satin etched privacy glass is available with three styles of etching.



Eclipse



Diamond



Prairie

3 Choose your opener:



Be sure to ask about our complete line of Overhead Door® garage door openers. Powerful, quiet and durable, Overhead Door's garage door openers are designed for performance, safety and convenience. Your Overhead Door Distributor will help you choose the opener that best suits your door and preferences.



Transform Your Home with the DoorView® visualization tool.

Go to overhaddoor.renoworks.com to try our on-line interactive software tool that lets you visualize what your home would look like with a garage door from Overhead Door. Contact your local Overhead Door Distributor for more information and to receive a quote.



15 Year Limited Warranty.

Durafirm Collection garage doors are backed by a fifteen-year limited warranty.*

* Warranties vary by model and are available upon request. See full text of warranty for details.

The Genuine. The Original.

Since 1921, Overhead Door Corporation has not only raised the standards of excellence for the industry—we've created them. Overhead Door created the first upward-acting door in 1921 and the first electric garage door opener in 1926.

Today, our network of over 400 Overhead Door Distributors are still leading the way with innovative solutions and unmatched installation, service and support. So look for the Red Ribbon. It's your guarantee that you're getting the genuine, the original Overhead Door.

SOLD AND DISTRIBUTED BY:



The Genuine. The Original.



2501 S. State Hwy. 121 Bus., Suite 200, Lewisville, TX 75067
1-800-929-DOOR • sales@overhaddoor.com
www.OverheadDoor.com